

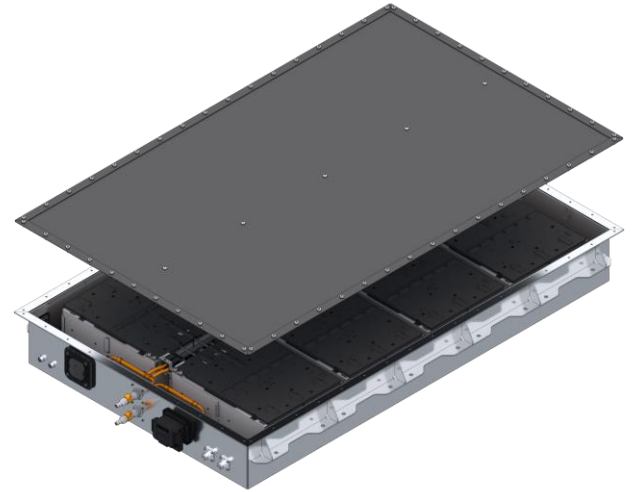
LION Smart Storage Long Life 33 Datasheet



Industry and Commercial
Energy Storage



Uninterruptible
Power Supply



Features

Availability

- Samples on pack-level available Q2/2025

Optimized Life-Time#

- Cycle Life >8.000
- High energy throughput over lifetime
- Warranty for rest capacity

High quality components

- LFP battery cells

Customizable setup

- Modular battery storage system for various configurations controlled and connected via customized PDU
- From stackable container applications to single battery pack usage
- Up to 1.500V architectures possible
- BMS for 300 - 1.500V separately available



Preliminary, subject to change
without notice

Standards Compliance

- UN 38.3
Transport Safety
- IEC 62619
- IEC 61508 SIL 2
Functional safety
- UL 1973 and UL 9540/A

Applicable Conditions

- Optimized shipping quantity:
 - Europe: 42 packs in wooden box
 - Overseas: 48 packs in wooden box

Contact Info

sales@lionsmart.com



Parameter	Unit	Value*
Configuration (Modules x Cells)		96s1p (8 x 12)
Battery Cell Chemistry		LFP
Charging end point (operation)	V	350.4
Nominal Voltage (DC)	V	307.2
Discharge end point (operation)	V	240.0
Nominal Capacity	Ah	109
Energy Content (nominal)	kWh	33.5
Energy Content (usable)	kWh	31.8
End of Life (State of Health)*	%	70
Cycle Life (@25°C ambient, 1C/1C & 80% DoD)	#	>8000
Cell (JR) Temperature Range - Operational Cell (JR) Temperature Range - Optimal	°C	-40 <-> 53 17 <-> 28
Protection class (IP class)		IP67, IP6K9K
Dimensions (L x W x H) Housing	mm	1450 x 900 x 181.5
Total Weight (depending on variant)	kg	approx. 276
Humidity Range (during storage)	%	0-90 (no condensation)
Cooling		Water-Glycol
Certificates, Norms & Standards (To be discussed in detail depending on application & use case)		Fully compliant for a wide range of mobile and stationary energy storage applications and use cases.

*Further use beyond this point is not recommended for safety reasons.



The Future Of Battery Technology

LION Smart